

# Type ICC Phenolic Insulating Couplings

For Threaded Rigid Conduit and IMC.

NEC/CEC:  
Rated for Ordinary Locations

## Applications

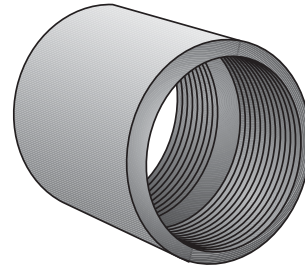
- An insulating coupling having a substantial center shoulder, which prevents butting of the conduits, to assure a definite break in the metallic path.
- The Type ICC is recommended for use where high strength or resistance to moisture or acid conditions is required.

## Features

- Will not melt, soften or burn
- Temperature rating +150 °C (+302 °F)
- Dielectric strength of 220 V/mil.
- Tapered threads (NPT)

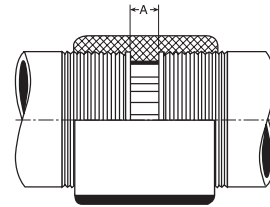
## Standard Materials

- Canvas base phenolic (black).



Type ICC

## Illustrated Dimensions



Trade Size (Inches)	Dimensions in Millimeters (Inches)			Catalog Number
	Maximum Diameter	Overall Length	"A" Shoulder	
1/2	28.70 (1.13)	35.05 (1.38)	9.65 (0.38)	ICC-50
3/4	33.27 (1.31)	38.10 (1.50)	9.65 (0.38)	ICC-75
1	41.40 (1.63)	44.45 (1.75)	9.65 (0.38)	ICC-100
1-1/4	50.80 (2.00)	47.75 (1.88)	9.65 (0.38)	ICC-125
1-1/2	57.15 (2.25)	50.80 (2.00)	9.65 (0.38)	ICC-150
2	69.85 (2.75)	54.10 (2.13)	9.65 (0.38)	ICC-200
2-1/2	82.55 (3.25)	79.50 (3.13)	16.00 (0.63)	ICC-250
3	98.55 (3.88)	82.55 (3.25)	16.00 (0.63)	ICC-300
3-1/2	111.25 (4.38)	85.85 (3.38)	16.00 (0.63)	ICC-350
4	127.00 (5.00)	92.20 (3.63)	16.00 (0.63)	ICC-400
5	158.75 (6.25)	101.60 (4.00)	19.05 (0.75)	ICC-500
6	184.15 (7.25)	107.95 (4.25)	19.05 (0.75)	ICC-600